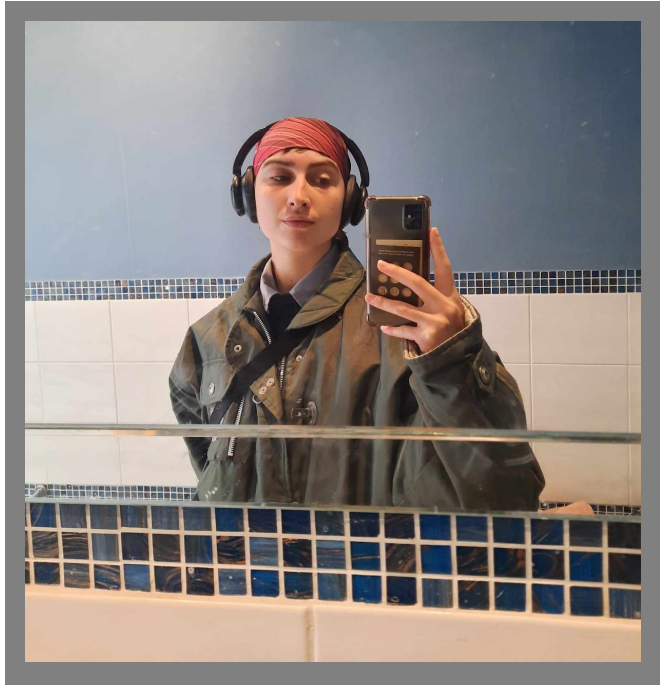


EMILY MATTHEWS

For Editor in Chief/ President



About Me

I'm a 3rd year psychology student currently on placement in the NHS (gross I know). I am a writer of poetry mainly and fairly depressing articles secondly. What I make is highly influenced by my queer working class identity. I've recently fallen for small publications in a major way thanks to Lippy.

Why me?

I was Head of Online (now deputy editor) last year and have been writing for Lippy for 2 years. I've submitted artwork to other student publications too like Scribe and The Journal.

As someone who writes poetry and articles and also draws, I think I'll be able to oversee all aspects of Lippy. I'm also a woman in stem masquerading as a creative; I'm organized and am used to juggling lots of things at once.

What would I change?

My main aim if I were editor would be to make Lippy more accessible for people who are from backgrounds not traditionally represented in publishing. I would do this by creating more of a community around Lippy as well as asking people from those background how they would like to see Lippy change.

Create more of a community around Lippy through weekly meeting/ writing + drawing sessions.

Create a quarterly zine for charity that gives more opportunities for design and gives the creative writing section of Lippy its own space.

