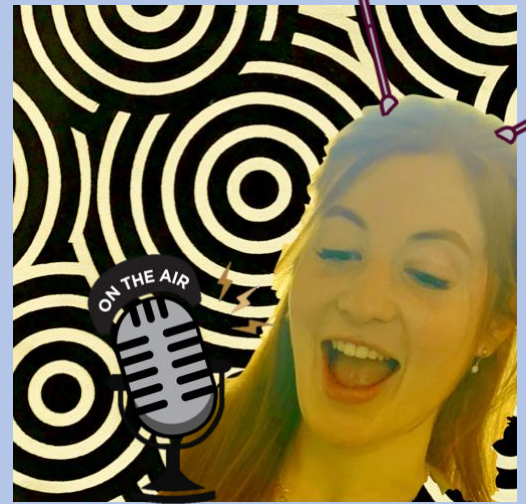


# Liv Clark

for *Deputy Station Manager*



## *Who, what, where?*

Hi!! I'm a second year studying Management with Marketing and love to make an event out of just about any occasion, making me a keen bean to take on this role – helping to organise and oversee all things within the society! Joining LSR was, without a doubt, the best decision I made when I started uni and I want to help keep up the LSR atmosphere that we all know and love <3.

## *Socials*

I am not one to shy away from a fancy dress theme (as seen below) and plan to incorporate plenty more into the socials next year! Definitely many more Otley runs and themed nights out ofc but also some more casual, 'swing-by' type of events at the pub/union – giving lots more opportunities to meet other people in the society.

## *Support*

My top priority as Deputy would be to support the Station Manager, other committee members and all of you in the best way possible. I would be a friendly, approachable and easy-to-reach point of contact, open to hearing any ideas or concerns. As well as helping with training sessions at the start of the semester, I would love to incorporate 'refresher' sessions within the terms for anyone that might have questions or maybe not had a chance to try the producing side of their shows yet.



## *Welfare*

Following on from the previous points, I recognise the importance of welfare within a society and want to uphold the supportive and inclusive values that LSR already encompasses. LSR is such an outlet and stress reliever for so many of us and I want to keep it that way! One way I hope to achieve this is by putting time into keeping the office as a comfortable and open space for everyone, no matter whether you are using it to work, socialise or between shows.