

FOR LEADERSHIP, CREATIVITY AND COMPASSION...

# ***Vote Lucy as your HR superstar!***

## **SO...WHY ME?**

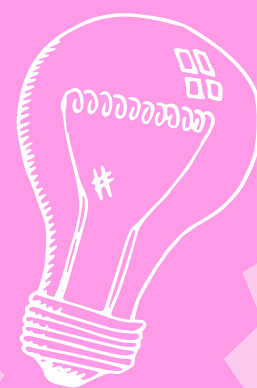
- I am a trustworthy and reliable face in ALL situations - you can come to me at any time about anything and I'll always be there to support you all <3
- I thrive in leadership positions and never hesitate to take on a challenge, from makeshift first aid to fighting my own accommodation case!
- I am super organised + have a lot of knowledge about various LUU/ uni systems so I'm well equipped to lead people to the correct contacts - nothing will phase me!
- Alongside being quite logical (organised queen) I can also be very creatively minded for that all-important stash! I already have lots of ideas for show and LUU too... stay tuned for AGM!
- If you need me - I'll be there!! I have impeccable social attendance + am not often a huge drinker so will always be a level head/ stable influence if needed :) I'm always on campus too!!
- I totally adore everything dance, choreo + Exposé - you can catch me in the studio every day! I am constantly striving to improve + will give 110% to my HR aims + looking after all you lovely gals



## **WHAT I'M HOPING TO ACHIEVE:**



**A once weekly stretch and destress class - let's relax our bodies and minds!**



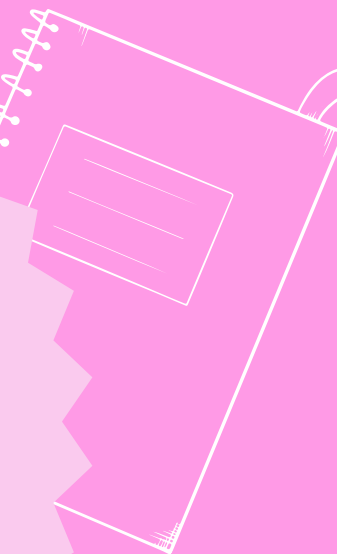
**A year - round charity collab with open fundraiser classes and community events**



**Weekly freshers chats in sem 1 - a way to help our newbies feel at home in Exposé + navigate uni life**



**Polls for stash - I want to get you all what YOU want! Designs, colours, embroidery etc**



**A fresher intro meeting pre the big Exposé first meeting - break it down to be less overwhelming**



**Work with our Social Sec for a 'Sober Sunday' once a month - wholesome vibes only <3**



**Wellness weeks once a semester! 7 days of advice, recommendations, interviews, support etc**

